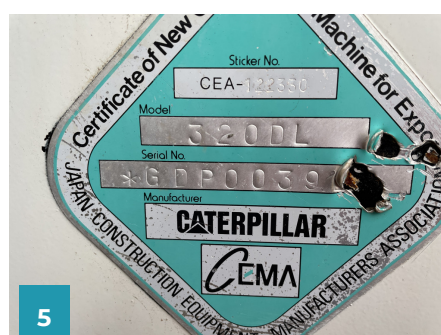


Caterpillar 320 C L 2018

Make	Caterpillar
Model	320 C L
Construction year	2018
Serial Number	CAT-TEST-EXC
Hours	50

General

	Value	Note
Chassis plate		1
Serial no.	Gdlkere	2
CE marked	Yes	3
Country of Origin	Usa	4
Engraved serial No.		5, 6, 7, 8, 9
Right Front		10
Front		11
Left Front		12
Left		Not possible
Left Back		13, 14
Back		15
Right Back		16
Right		17
Outside video		

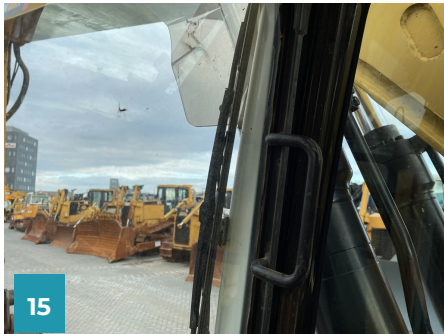




Cabin

	Value	Note	
Hourmeter reading	50 h		1
Hour meter verified	Issues	Not working	2
Cleanliness	Approved		3
Seat	Approved		4, 5, 6
Controls & levers	Approved		7, 8
Switches	Approved		9, 10
A/C	Approved		11
Heating	Approved		12
Windows	Approved		13, 14
Wipers			15
Mirrors	Approved		16, 17
Floor mat	Issues	Not there	
Structure type	ROPS		
Structure	Approved		
Rear camera	Issues	Not working	
3D pre-equipment	Yes		18
Cabin inside video			

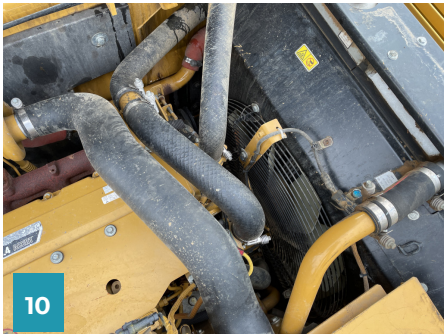
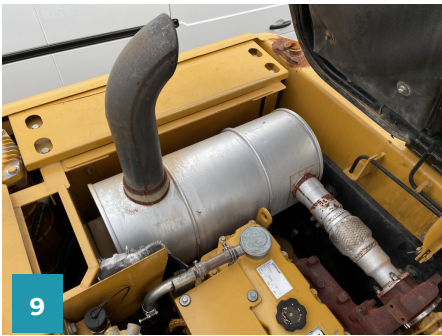
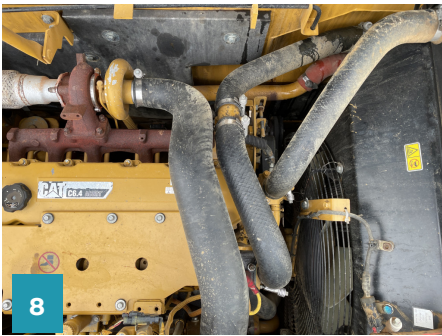
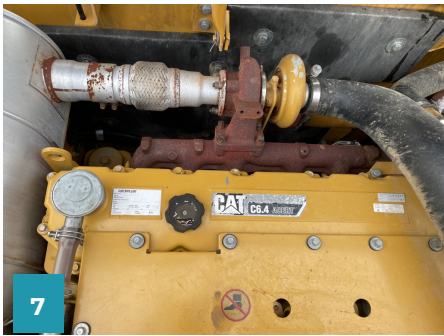
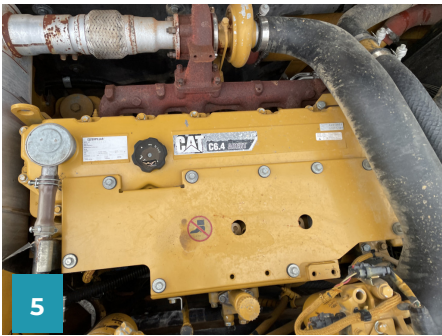




Engine

	Value	Note
Engine plate		1, 2
Brand & model	C6.4	3
Engine power	138 kw	
Engine Serial- No.		4
EPA Marked	Yes	5
EPA stage	IVf	
Fuel Type	Diesel	6
Oil leaks	Approved	
Oil condition	Approved	7
Oil level		8
Exhaust system	Approved	9
Smoke	Approved	
Cooling system		10
Blow-by at idle	Approved	
Belts	Approved	11
Filters	Approved	12





Exterior

	Value	Note	
Chassis & track frame	Approved		1
Engine hood			2
Steps & handrails	Approved		3
Boom type	Mono		4
Boom length	8 m		5
Boom condition	Approved		6
Pins boom image			7
Counterweight	Imperfections	Not good	8, 9, 10
Covers			11
Side doors	Approved		12
Compartments	Approved		13
Catwalk	Approved		14
Lights	Approved		15
Paintwork	Approved		16
Central lubrication system			17
Central lubrication type	Automatic		





Hydraulics

	Value	Note
Auxiliary lines	Yes	

Attachments

	Value	Note
Quick coupler	Approved	1
Quick coupler type	Hydraulic	2, 3
Quick coupler brand	Cat	
Grapple	Approved	4

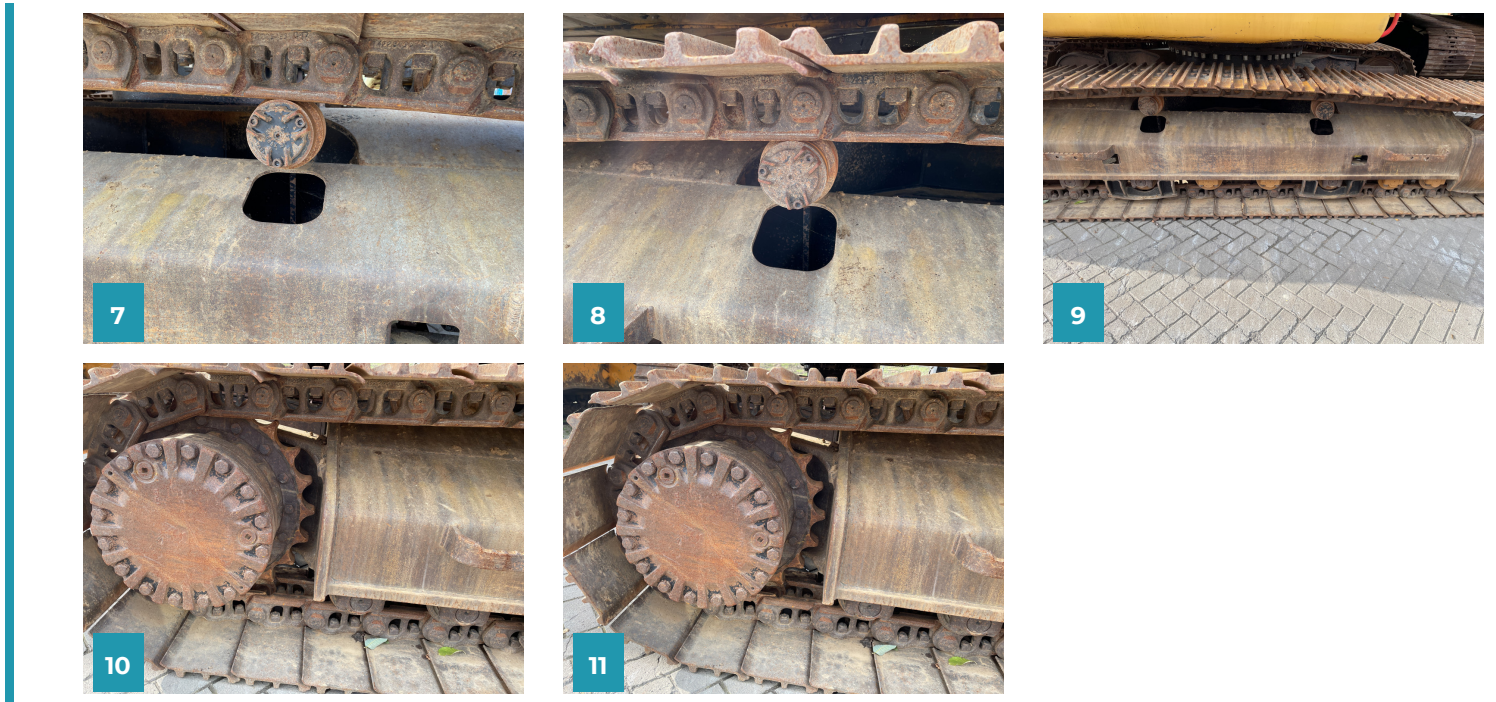


Undercarriage

Undercarriage Right

	Value	Note
Track pitch		1
Track tensioner		2
Pins and bushings	100%	3
Rotated pins and bushings	Yes	4
Shoes	100%	5
Idler		6
Top rollers		7, 8
Links		9
Sprocket		10, 11





Undercarriage Left

	Value	Note
Pins and bushings	100%	
Rotated pins and bushings	Yes	
Shoes	100%	

Final checking

	Value	Note
Final hour meter reading		1
Gross weight	508 kg	
Transport length	58 m	
Transport width	582 m	
Transport height	580 m	
Inspector comment	Great buy	

